



W212

Copy key without key

CG-MB

CGDI-MB OAS 4 20 84

EIS

Read/Write Key

Compute Password

Generate EE

Auto Computer

ELV

EIS Basic Information

SSID: FO ED 2A 38 Write

VIN: WDC6E8JZ01M2K4L3A Allow Modify

EIS number: 2129055000

Mileage: 1609342 KM

The last key used: 1

The penultimate used: Unused

EIS Key Basic Information

	Used	Disabled
Key 1: 09 72 3A 62 F2 7A 86 45	<input checked="" type="checkbox"/>	<input type="checkbox"/>
Key 2: C8 76 55 D3 23 2E 24 BA	<input type="checkbox"/>	<input type="checkbox"/>
Key 3: 12 B7 DB 9C 22 3B 0D C8	<input checked="" type="checkbox"/>	<input type="checkbox"/>
Key 4: 46 1A DE F0 50 40 8F D9	<input type="checkbox"/>	<input type="checkbox"/>
Key 5: B5 AF F3 72 6A B4 D6 59	<input type="checkbox"/>	<input type="checkbox"/>
Key 6: 0B EE 4F B2 DA B2 0B 39	<input type="checkbox"/>	<input type="checkbox"/>
Key 7: 2D 0A A1 D8 C3 DF F6 A0	<input type="checkbox"/>	<input type="checkbox"/>
Key 8: 89 A5 8F 95 8E 0D 90 21	<input type="checkbox"/>	<input type="checkbox"/>

Key password: Copy Paste

Special key: OA 97 05 5B F3 30 67 11

Erase password: Get

Enable Password: Get

Initialized Personalized

TP cleared Activated

Dealer EIS FBS4

Read EIS Data

Save EIS Data

Load EIS Data

Write EIS Data

Wipe the EIS

Clear TP Protection

Activate EIS

Disable Enable

Sync W204 ELV

Read success!

Connects OBD, Go to EIS interface, read related information

CGDI-MB OAS 4 20 84

EIS

Read/Write Key

Compute Password

Generate EE

Auto Computer

ELV

Collect Data and Upload the File

EIS Type:

1.Waiting to read the EIS data
2.Insert the Simulation Key into the EIS
3.Start collecting, it will take a long time, do not disconnect the device
4.Collection complete, please save data, then click Upload Data

Query the Server and Wait For the Results

Key password

Operation Tip:
1. Please choose the way to collect the key first, and then click the 'Collect Data' button
2. After the collection is completed, click the 'Upload Data' button to upload the collected data
3. Click the 'Query Result' button and check the 'Auto Refresh' option, the program will start the automatic query.

Copy key with key
 Copy key without key

Collect Data

Upload Data

Query Result

Auto Refresh

Turn to “compute password”, choose “copy key without key”



EIS



Read/Write Key



Compute Password



Generate EE



Auto Computer



ELV

Collect Data and Upload the File

EIS Type:

- 1.Waiting to read the EIS data
- 2.Insert the Simulation Key into the EIS
- 3.Start collecting, it will take a long time, do not disconnect the device
- 4.Collection complete, please save data, then click Upload Data

Query the Server and Wait For the Results

Key password

Copy

Operation Tip:

1. Please choose the way to collect the key first, and then click the 'Collect Data' button
2. After the collection is completed, click the 'Upload Data' button to upload the collected data
3. Click the 'Query Result' button and check the 'Auto Refresh' option, the program will start the automatic query.

 Copy key with key Copy key without key

Collect Data



Upload Data

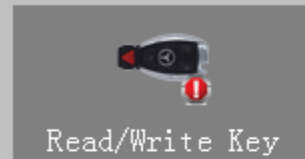


Query Result

 Auto Refresh

Start keyless collection ...

Click“collect data”



Collect Data and Upload the File

EIS Type:

W166, 197, 212 (Old), 212, 246

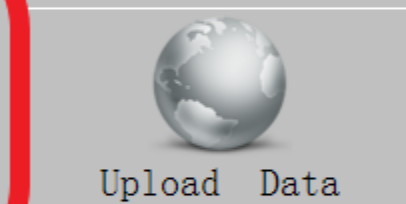
1. Waiting to read the EIS data
2. Insert the Simulation Key into the EIS
3. Start collecting, it will take a long time, do not disconnect the device
4. Collection complete, please save data, then click Upload Data

Please insert the Simulation Key into the EIS in 30 seconds.....

Query
Key

The vehicle voltage is 12.01V

- Copy key with key
- Copy key without key



- Auto Refresh

Start keyless collection ...

please insert the simulation into the EIS in 30 seconds



Picture for operating Physical goods

CGDI-MB OAS 4 20 84

EIS

Read/Write Key

Compute Password

Generate EE

Auto Computer

DIY

Collect Data and Upload the File

EIS Type:
W166, 197, 212 (Old), 212, 246

1. Waiting to read the EIS data
2. Insert the Simulation Key into the EIS
3. Start collecting, it will take a long time, do not disconnect the device
4. Collection complete, please save data, then click Upload Data

Query the Server and Wait For the Results

Key password Copy

The vehicle voltage is 12.01V

5%

Start keyless collection ...

Copy key with key
 Copy key without key

Collect Data

Upload Data

Query Result

Auto Refresh

It is collecting...



EIS



Read/Write Key



Compute Password



Generate EE



Auto Computer



ELV

Collect Data and Upload the File

EIS Type:

W166, 197, 212 (Old), 212, 246

1. Waiting to read the EIS data
2. Insert the Simulation Key into the EIS
- ➔ 3. Start collecting, it will take a long time, do not disconnect the device
4. Collection complete, please save data, then click Upload Data

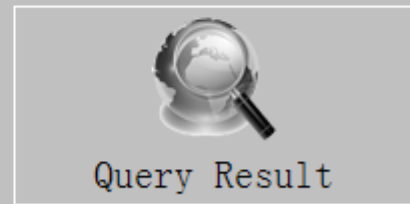
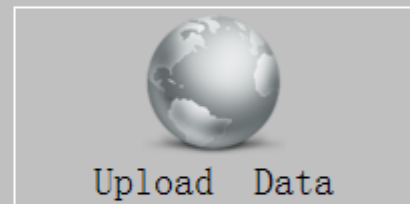
Query the Server and Wait For the Results

Key password

Copy

The vehicle voltage is 12.01V

- Copy key with key
- Copy key without key

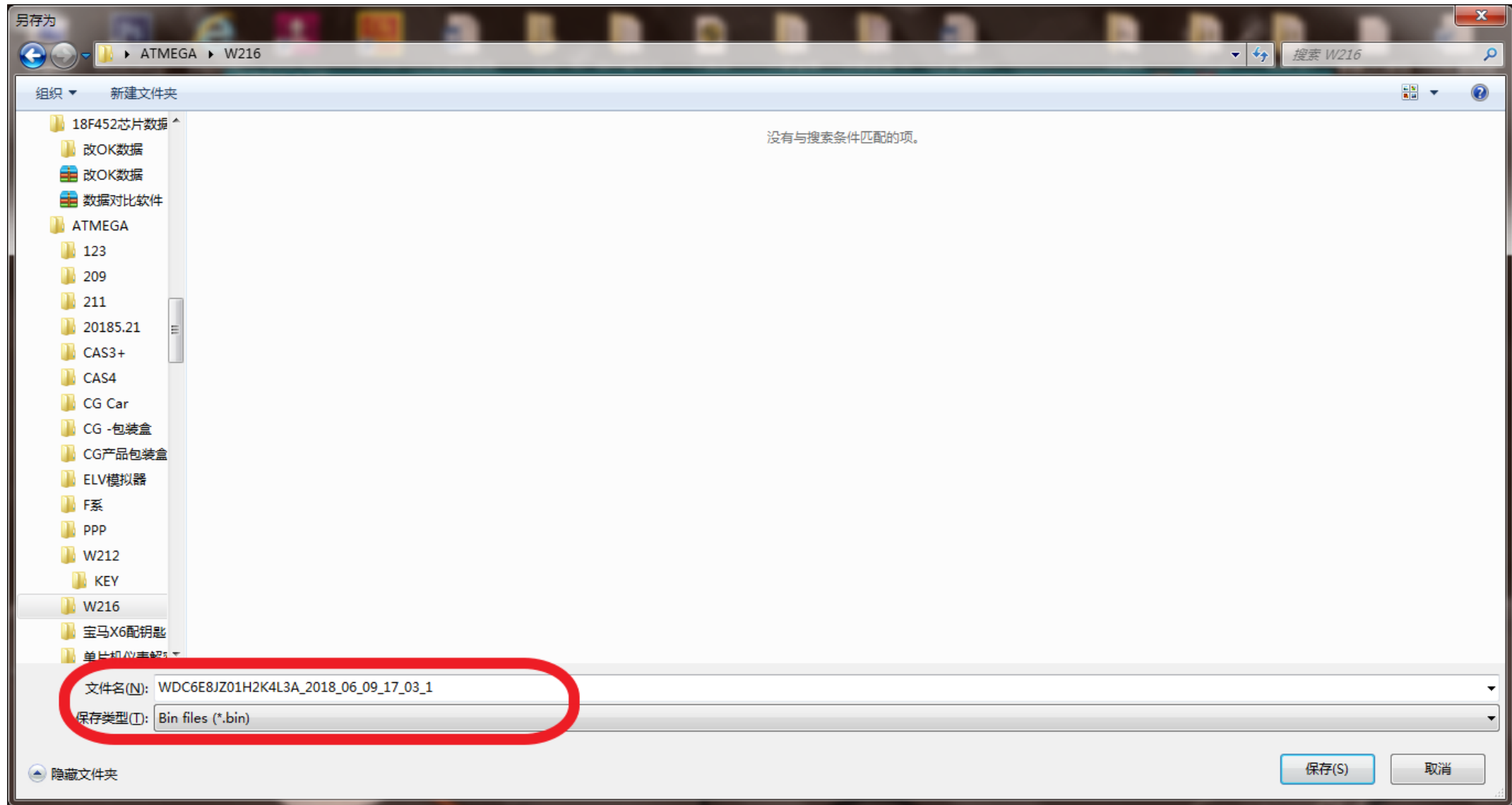


- Auto Refresh



Start keyless collection ...

Collected 30%



Collection end, save data, default file name

- EIS
- Read/Write Key
- Compute Password
- Generate EE
- Auto Computer
- ELV

Collect Data and Upload the File

EIS Type:

W166, 197, 212 (Old), 212, 246

1. Waiting to read the EIS data
2. Insert the Simulation Key into the EIS
3. Start collecting, it will take a long time, do not disconnect the device
4. Collect data successfully, please save data, and then upload data

- Copy key with key
- Copy key without key

Collect Data

Upload Data

Query Result

- Auto Refresh

Benz Monster

Save the file successfully. Please upload the data to calculate PASSWORD

确定

Query Result

Key p...

The vehicle voltage is 12.01V
Collection is done!
Processing data ...
Save the file successfully. Please upload the data to calculate PASSWORD

100%

Collect data to save file successfully!

Save data successfully



EIS



Read/Write Key



Compute Password



Generate EE



Auto Computer



ELV

Collect Data and Upload the File

EIS Type:

W166, 197, 212 (Old), 212, 246

1. Waiting to read the EIS data
2. Insert the Simulation Key into the EIS
3. Start collecting, it will take a long time, do not disconnect the device
4. Collection complete, please save data, then click Upload Data

Query the Server and Wait For the Results

Key password

Copy

```
The vehicle voltage is 12.01V
Collection is done!
Processing data ...
Save the file successfully. Please upload the data to calculate PASSWORD
```

 Copy key with key Copy key without key

Collect Data



Upload Data



Query Result

 Auto Refresh

Collect data to save file successfully!

Click“upload data”, open the data just saved

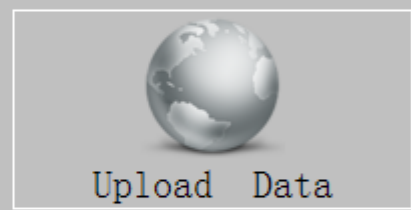
- EIS
- Read/Write Key
- Compute Password
- Generate EE
- Auto Computer
- ELV

Collect Data and Upload the File

EIS Type:

- 1.Waiting to read the EIS data
- 2.Insert the Simulation Key into the EIS
- 3.Start collecting, it will take a long time, do not disconnect the device
- 4.Collecting data...

- Copy key with key
- Copy key without key



Auto Refresh

Benz Monster

Upload data successfully, please click the [Query Results] button to query

确定

Your remaining number of calculated passwords today is 0
Upload data successfully, please click the [Query Results] button to query

Upload data successfully, please click the [Query Results] button to query

Upload data successfully

- EIS
- Read/Write Key
- Compute Password
- Generate EE
- Auto Computer
- ELV


Collect Data and Upload the File

EIS Type:

- 1.Waiting to read the EIS data
- 2.Insert the Simulation Key into the EIS
- 3.Start collecting, it will take a long time, do not disconnect the device
- 4.Collection complete, please save data, then click Upload Data

- Copy key with key
- Copy key without key


Collect Data


Upload Data

Query the Server and Wait For the Results

Key password

Copy

```
Select automatic refresh to automatically query until the results are calculated, or only once to exit!  
Querying...  
--- Query times: 1 --- Calculating, please wait ---  
--- Query times: 2 --- Calculating, please wait ---  
--- Query times: 3 --- Calculating, please wait ---
```


Query Result

Auto Refresh

Querying...

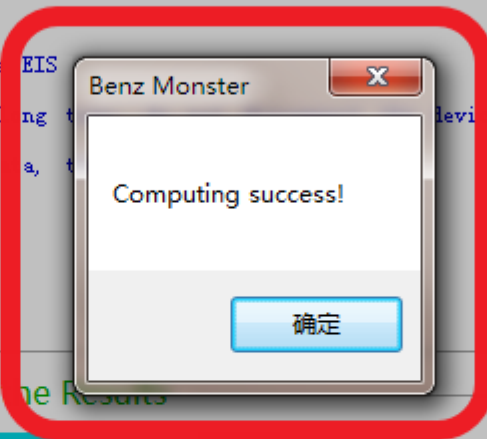
Click "Query Result"

- EIS
- Read/Write Key
- Compute Password
- Generate EE
- Auto Computer
- ELV

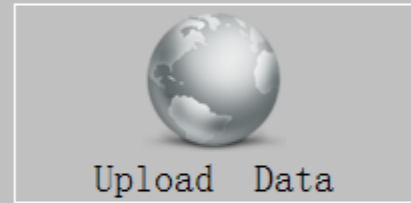
Collect Data and Upload the File

EIS Type:

- 1.Waiting to read the EIS data
- 2.Insert the Simulation Key into the EIS
- 3.Start collecting, it will take a long time
- 4.Collection complete, please save data, t



- Copy key with key
- Copy key without key



- Auto Refresh

Query the Server and Wait For the Results

Key password 8E C2 F2 06 63 A7 B5 5F

```
--- query times: 0 --- Calculating, please wait ---  
--- Query times: 9 --- Calculating, please wait ---  
--- Query times: 10 --- Calculating, please wait ---  
--- Query times: 11 --- Calculating, please wait ---  
--- Query times: 12 --- Calculating, please wait ---  
--- Query times: 13 --- Calculating, please wait ---  
--- Query times: 14 --- Calculating, please wait ---  
--- Query times: 15 --- Calculating, please wait ---  
Computing success!
```

Querying ...

Key password computing success

CGDI-MB OAS 3 20 84

EIS

Read/Write Key

Compute Password

Generate EE

Auto Computer

ELV

Collect Data and Upload the File

EIS Type:

1.Waiting to read the EIS data
2.Insert the Simulation Key into the EIS
3.Start collecting, it will take a long time, do not disconnect the device
4.Collection complete, please save data, then click Upload Data

Copy key with key
 Copy key without key

Collect Data

Upload Data

Query the Server and Wait For the Results

Key password **BE C2 F2 06 63 A7 B5 5F** **Copy**

```
--- query times: 0 --- Calculating, please wait ---  
--- Query times: 9 --- Calculating, please wait ---  
--- Query times: 10 --- Calculating, please wait ---  
--- Query times: 11 --- Calculating, please wait ---  
--- Query times: 12 --- Calculating, please wait ---  
--- Query times: 13 --- Calculating, please wait ---  
--- Query times: 14 --- Calculating, please wait ---  
--- Query times: 15 --- Calculating, please wait ---  
Computing success!
```

Auto Refresh

Query Result

Query end

Copy key password

CGDI-MB OAS 3 20 84

EIS

Read/Write Key

Compute Password

Generate EE

Auto Computer

ELV

Welcome to use!

EIS Basic Information

SSID: FO ED 2A 38

VIN: WDC6E8JZ01M2K4L3A

EIS number: 2129055000

Mileage: 1609342 KM

The last key used: 1

The penultimate used: Unused

EIS Key Basic Information

Key	Hex	Used	Disabled	Key password	Special key	Erase password	Enable Password
Key 1	09 72 3A 62 F2 7A 86 45	<input checked="" type="checkbox"/>	<input type="checkbox"/>	8E C2 F2 06 63 A7 B5 5F	0A 97 05 5B F3 30 67 11	<input type="button" value="Get"/>	<input type="button" value="Get"/>
Key 2	C8 76 55 D3 23 2E 24 BA	<input type="checkbox"/>	<input type="checkbox"/>				
Key 3	12 B7 DB 9C 22 3B 0D C8	<input checked="" type="checkbox"/>	<input type="checkbox"/>				
Key 4	46 1A DE F0 50 40 8F D9	<input type="checkbox"/>	<input type="checkbox"/>				
Key 5	B5 AF F3 72 6A B4 D6 59	<input type="checkbox"/>	<input type="checkbox"/>				
Key 6	0B EE 4F B2 DA B2 0B 39	<input type="checkbox"/>	<input type="checkbox"/>				
Key 7	2D 0A A1 D8 C3 DF F6 AD	<input type="checkbox"/>	<input type="checkbox"/>				
Key 8	89 A5 8F 95 8E 0D 90 21	<input type="checkbox"/>	<input type="checkbox"/>				

Initialized Personalized

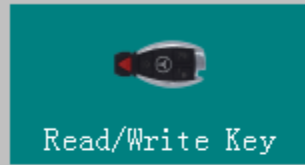
TP cleared Activated

Dealer EIS FBS4

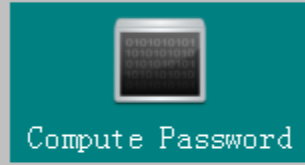
Go to EIS interface, Copy key password



EIS



Read/Write Key



Compute Password



Generate EE



Auto Computer



ELV

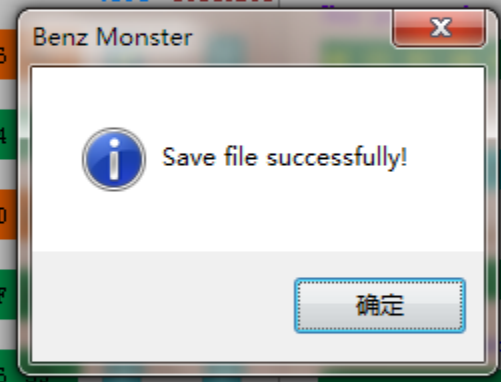
EIS Basic Information

SSID	VIN	Write
FO ED 2A 38	WDC6E8JZ01M2K4L3A	Allow Modify
EIS number	Mileage	The last key used
2129055000	1609342 KM	1
		The penultimate used
		Unused

EIS Key Basic Information

	Used	Disabled		
Key 1	09 72 3A 62 F2 7 86		3 A7 B5 5F	Copy Paste
Key 2	C8 76 55 D3 23 2 24			
Key 3	12 B7 DB 9C 22 3 0D		3 30 67 11	Get
Key 4	46 1A DE FO 50 4 8F			
Key 5	B5 AF F3 72 6A BA 06			Get
Key 6	0B EE 4F B2 DA B2 0B 39	<input type="checkbox"/>		
Key 7	2D 0A A1 D8 C3 DF F6 A0	<input type="checkbox"/>		
Key 8	89 A5 8F 95 8E OD 90 21	<input type="checkbox"/>		

Initialized Personalized
 TP cleared Activated
 Dealer EIS FBS4



Read EIS Data

Save EIS Data

Load EIS Data

Write EIS Data

Wipe the EIS

Clear TP Protection

Activate EIS

Disable

Enable

Sync W204 ELV

Save file successfully!

Save EIS data, default file name

CGDI-MB OAS 3 20 84

EIS

Read/Write Key

Compute Password

Generate EE

Auto Computer

ELV

Load the EIS File and Confirm the PASSWORD

SSID: FO ED 2A 38 VIN: WDC6E8JZ01H2K4L3A

Key password: 8E C2 F2 06 63 A7 B5 5F

Load EIS File

Generate Key File

Select the Key File Format and Location to Generate

1. Select the key file format
2. Select generate key position
3. Click the [Generate Key File] button to generate

V041 V051

Key 1 Key 2 Key 3 Key 4

Key 5 Key 6 Key 7 Key 8 Select All

Loading EIS file...
Load EIS file successfully!

Load EIS file successfully!

Turn to “Generate EE”, Check the related information with the EIS data just saved

CGDI-MB OAS 3 19 84

EIS

Read/Write Key

Compute Password

Generate EE

Auto Computer

ELV

Load the EIS File and Confirm the PASSWORD

SSID: FO ED 2A 38 VIN: WDC6E8JZ01H2K4L3A

Key password: 6E C2 F2 06 63 A7 B5 5F

Select the Key File Format and Location to Generate

1. Select the key file format
2. Select generate key position
3. Click the [Generate Key File] button to generate

V041 V051

Key 1 Key 2 Key 3 Key 4

Key 5 Key 6 Key 7 Key 8 Select All

The number of times remaining for calculate EE today: 19
--- Query times: 1 --- Current number of queues: 1 ---Probably waiting time:
1 minutes ---

Load EIS File

Generate Key File

Load EIS file successfully!

Generate key file



EIS



Read/Write Key



Compute Password



Generate EE



Auto Computer



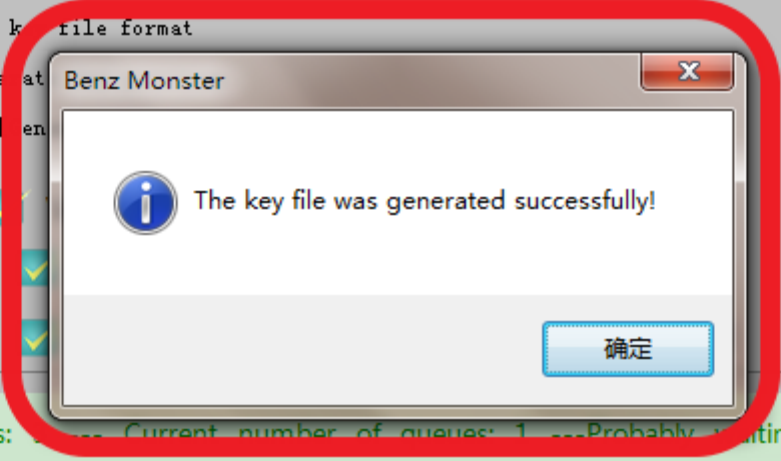
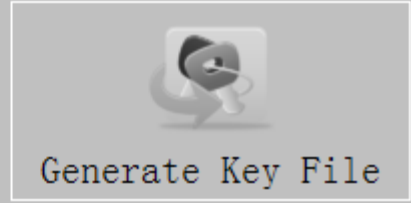
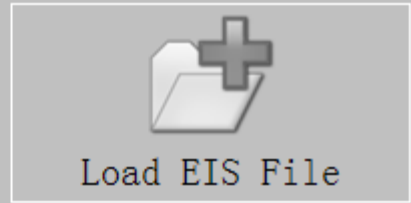
ELV

Load the EIS File and Confirm the PASSWORD

SSID	VIN
FO ED 2A 38	WDC6E8JZ01H2K4L3A
Key password	
8E C2 F2 06 63 A7 B5 5F	

Select the Key File Format and Location to Generate

1. Select the key file format
 2. Select generate
 3. Click the generate
- Key 1
- Key 5



```
--- Query times: ... Current number of queues: 1 --- Probably waiting time: 1 minutes ---  
--- Query times: 4 --- Generating, please wait ---  
--- Query times: 5 --- Generating, please wait ---  
Generating the key file, please wait ...
```

Load EIS file successfully!

The key file was generated successfully, save it in a new folder



Insert the new key into the equipment

CGDI-MB OAS 3 19 84

EIS

Read/Write Key

Compute Password

Generate EE

Auto Computer

ELV

Key Basic Information

SSID: 00 00 00 00

Position: 00

Available times: 00

State: **Activate** Unused

Times used: 00

Version: BE

Key password: **Copy** **Paste**

Track code: **Copy**

Interface:

- Infrared
- NEC Adapter

Read Key/Chip

Reset

Open/Write

Current hash

Save BE File

00000000	00 00 00 00 00 00 00 00 00 00 00 00 00 00 00
00000010	00 00 00 00 00 00 00 00 00 00 00 00 00 00 00
00000020	00 00 00 00 00 00 00 00 00 00 00 00 00 00 00
00000030	00 00 00 00 00 00 00 00 00 00 00 00 00 00 00
00000040	00 00 00 00 00 00 00 00 00 00 00 00 00 00 00
00000050	00 00 00 00 00 00 00 00 00 00 00 00 00 00 00
00000060	00 00 00 00 00 00 00 00 00 00 00 00 00 00 00
00000070	00 00 00 00 00 00 00 00 00 00 00 00 00 00 00
00000080	00 00 00 00 00 00 00 00 00 00 00 00 00 00 00
00000090	00 00 00 00 00 00 00 00 00 00 00 00 00 00 00

Read success!

Read key information

- EIS
- Read/Write Key
- Compute Password
- Generate EE
- Auto Computer
- ELV

Key Basic Information

SSID	Position
Available times	State Activate
Times used	Version
Key password	Copy

- Interface:
- Infrared
 - NEC Adapter
- Read Key/Chip
- Reset**
- Open/Write
- Current hash
- Save BE File

Benz Monster

Reset operation succeed!

确定

00000000	00 00 00 00 00 00 00 00
00000010	00 00 00 00 00 00 00 00
00000020	00 00 00 00 00 00 00 00
00000030	00 00 00 00 00 00 00 00
00000040	00 00 00 00 00 00 00 00
00000050	00 00 00 00 00 00 00 00
00000060	00 00 00 00 00 00 00 00
00000070	00 00 00 00 00 00 00 00
00000080	00 00 00 00 00 00 00 00
00000090	00 00 00 00 00 00 00 00

Reset operation succeed!

wipe out key

EIS

Read/Write Key

Compute Password

Generate EE

Auto Computer

ELV

Key Basic Information

SSID

Position

Available time

State

Time

Key

00000000	00 00 00 00 00 00 00 00 00 00 00 00 00 00 00 00
00000010	00 00 00 00 00 00 00 00 00 00 00 00 00 00 00 00
00000020	00 00 00 00 00 00 00 00 00 00 00 00 00 00 00 00
00000030	00 00 00 00 00 00 00 00 00 00 00 00 00 00 00 00
00000040	00 00 00 00 00 00 00 00 00 00 00 00 00 00 00 00
00000050	00 00 00 00 00 00 00 00 00 00 00 00 00 00 00 00
00000060	00 00 00 00 00 00 00 00 00 00 00 00 00 00 00 00
00000070	00 00 00 00 00 00 00 00 00 00 00 00 00 00 00 00
00000080	00 00 00 00 00 00 00 00 00 00 00 00 00 00 00 00
00000090	00 00 00 00 00 00 00 00 00 00 00 00 00 00 00 00

Please Note

Smart key please choose 41 format, common key and BE key please choose 51 format!

When writing the original key, please make sure that it is wiped by the CGMB, otherwise the write will fail!

OK

Interface:

- Infrared
- NEC Adapter

Read Key/Chip

Reset

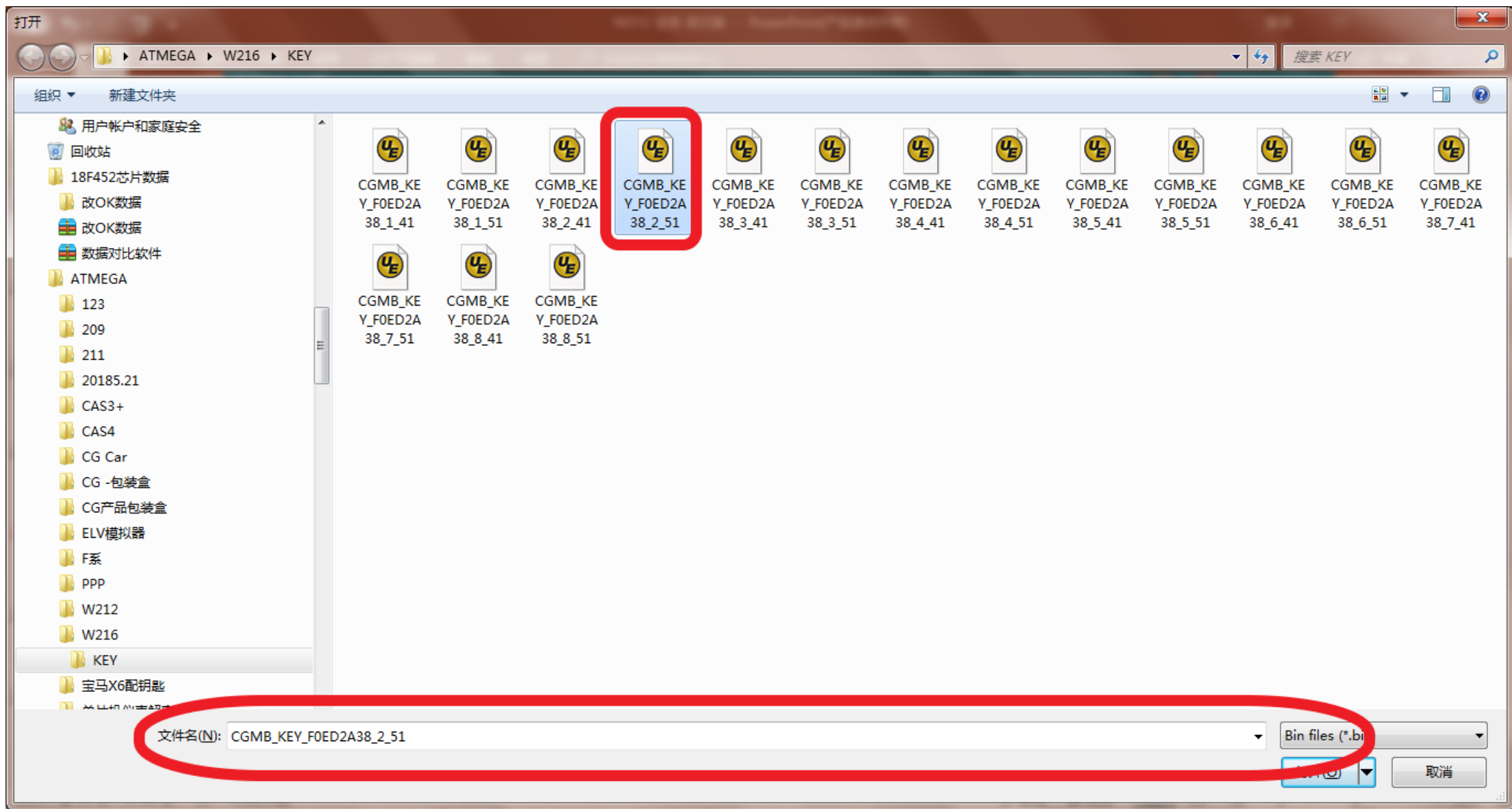
Open/Write

Current hash

Save BE File

Reset operation succeed!

Click "open/write", please note prompt



选择未使用的钥匙位文件

CGDI-MB OAS 3 19 84

Key Basic Information

SSID: [redacted] Position: [redacted]

Available times: [redacted] State: [redacted] **Activate**

Times used: [redacted] Version: [redacted]

Key password: [redacted] **Copy** [redacted] **Copy**

Interface:

Infrared
 NEC Adapter

Buttons: Read Key/Chip, Reset, Open/Write, Current hash, Save BE File

Left Panel: EIS, Read/Write Key, Compute Password, Generate EE, Auto Computer, ELV

Hex Dump:

00000000	01 8E C2 F2 06 63	...
00000010	A2 1A 1A 35 57 C8	... 5 W ...
00000020	79 25 63 E0 7F BD	y % c ...
00000030	77 90 96 84 00 2E	w ... i ...
00000040	78 0A 98 91 71 2D 25 8A 12 1E FC F9 1C 16 D3 B1	x ... q - % ...
00000050	62 BA 75 1F 23 E4 4E 50 E2 A3 29 42 55 7C D5 53	b . u . # . N .
00000060	B8 2E 4B FF 82 E0 56 78 5B 7F FF FF FF FF FF	... K ... V x [
00000070	FF FF FF BA 24 2E 23 D3 55 76 C8 7F FF 00 00 02	... \$. # . U
00000080	FF FF FF FF FF FF FF FF 1E 90 3E 5A F1 ED 2A 38	...
00000090	01 01 01 01 FF FF FF FF 73 0C FF FF FF FF 04 FC	... s

Dialog Box: Benz Monster Write success! 确定

Write success!

Write success, get on car

CGDI-MB OAS 3 19 84

EIS

Read/Write Key

Compute Password

Generate EE

Auto Computer

ELV

EIS Basic Information

SSID: FO ED 2A 38 Write

VIN: WDC6E8JZ01M2K4L3A Allow Modify

EIS number: 2129055000

Mileage: 1609342 KM

The last key used: 2

The penultimate used: Unused

EIS Key Basic Information

Key	Hex	Used	Disabled
Key 1	09 72 3A 62 F2 7A 86 45	<input checked="" type="checkbox"/>	<input type="checkbox"/>
Key 2	99 42 25 A5 E2 D6 4E E4	<input checked="" type="checkbox"/>	<input type="checkbox"/>
Key 3	12 B7 DB 9C 22 3B 0D C8	<input checked="" type="checkbox"/>	<input type="checkbox"/>
Key 4	46 1A DE FO 50 40 8F D9	<input type="checkbox"/>	<input type="checkbox"/>
Key 5	B5 AF F3 72 6A B4 D6 59	<input type="checkbox"/>	<input type="checkbox"/>
Key 6	0B EE 4F B2 DA B2 0B 39	<input type="checkbox"/>	<input type="checkbox"/>
Key 7	2D 0A A1 D8 C3 DF F6 A0	<input type="checkbox"/>	<input type="checkbox"/>
Key 8	89 A5 8F 95 8E 0D 90 21	<input type="checkbox"/>	<input type="checkbox"/>

Key password: Copy Paste

Special key: OA 97 05 5B F3 30 67 11

Erase password: Get

Enable Password: Get

Initialized
 TP cleared
 Dealer EIS

Personalized
 Activated
 FBS4

Read EIS Data

Save EIS Data

Load EIS Data

Write EIS Data

Wipe the EIS

Clear TP Protection

Activate EIS

Disable Enable

Sync W204 ELV

Read success!

Read EIS data again, show that key position was used, 结合新钥匙